

# **Regionale behov**

**– hvordan skape et sterkt FoU miljø for regional utvikling på Vestlandet?**

**Hvilke muligheter representerer BAS?**

v/ Anders Rubing og Cecilie Andersson

...regionale **utfordringer**...

**Utvikle og forvalte** bykultur  
i kystkultur, i fjordkultur

Utvikle og forvalte  
by- og landskapsmiljø

- Registrere/ analysere /vise situasjon/hva vi har
- Samarbeide med utviklere og forvaltere



Utvikle forvalterrollen...



**Forholde seg til kvaliteter i  
SITUASJONEN**

Illustrasjon fra  
diplomoppgave;  
Vågard Nyås



Vår situasjon



Vår utfordring...



Planforslag, Kristiansholm, enda ikke lagt ut på høring

Hvordan forstår vi dette?

*Parti fra Nesttun*







Iscenesettelse av byen. Del av kunstnerisk utsmykning i forbindelse med bybanen.

**The White Rabbit, Rachel Dagnall, Anita Hillestad**



Hvordan forstår vi dette?

# TETTSTADSUTVIKLING

# URBANISME

**STED  
FOLK  
SAMFUNN**

**ALLMENNINGEN  
LANDSKAPSROMMET**

**ALLMENNINGEN  
TUNET/BYROMMET**

**ALLMENNINGEN  
INDIVIDET**



**BAS**

Søknad ERASMUS + prosjekt:

Project proposal for ERASMUS+ KA2 Cooperation for innovation and the exchange of good practice

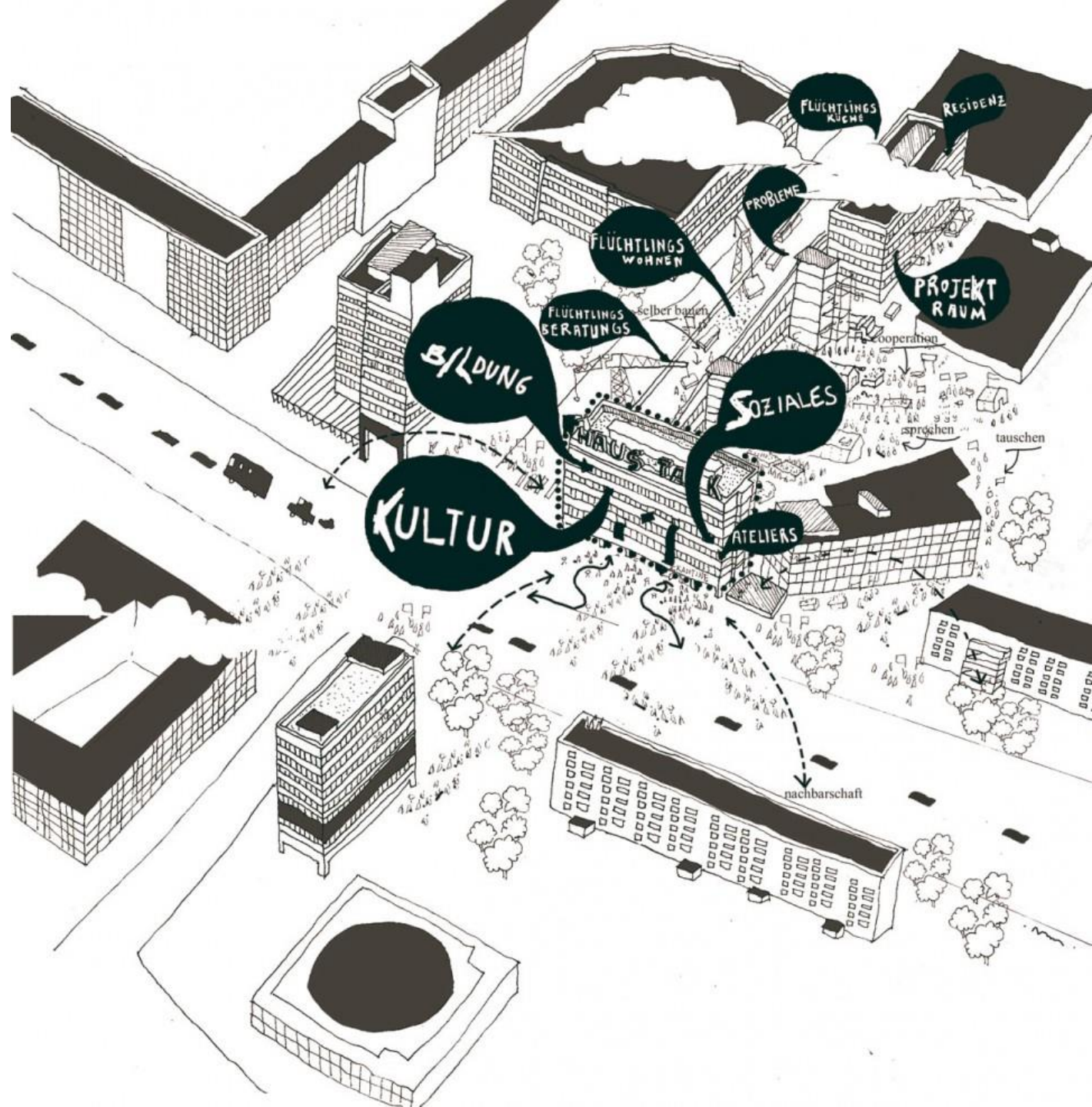
# **Mapping, Reflecting and Developing PhD-by-design programs**

Bergen School of Architecture  
Chalmers University of Technology  
KU Leuven  
University of Liechtenstein



Christof Mayer  
Jan Liesegang

RAUMLABOR



Christof Mayer  
Jan Liesegang

RAUMLABOR

## **DiverseCity 02 - Spaces for Work**

- the shift in societal meaning of work and its impact on urban development

## **Architecture as infrastructure for living together**

### **STADTRAUM IMAGINATION**

We transform urban spaces into something completely different, far from all expectations and visions. We move programmatic narratives into urban spaces, install new atmospheres and create a sense of new potential.

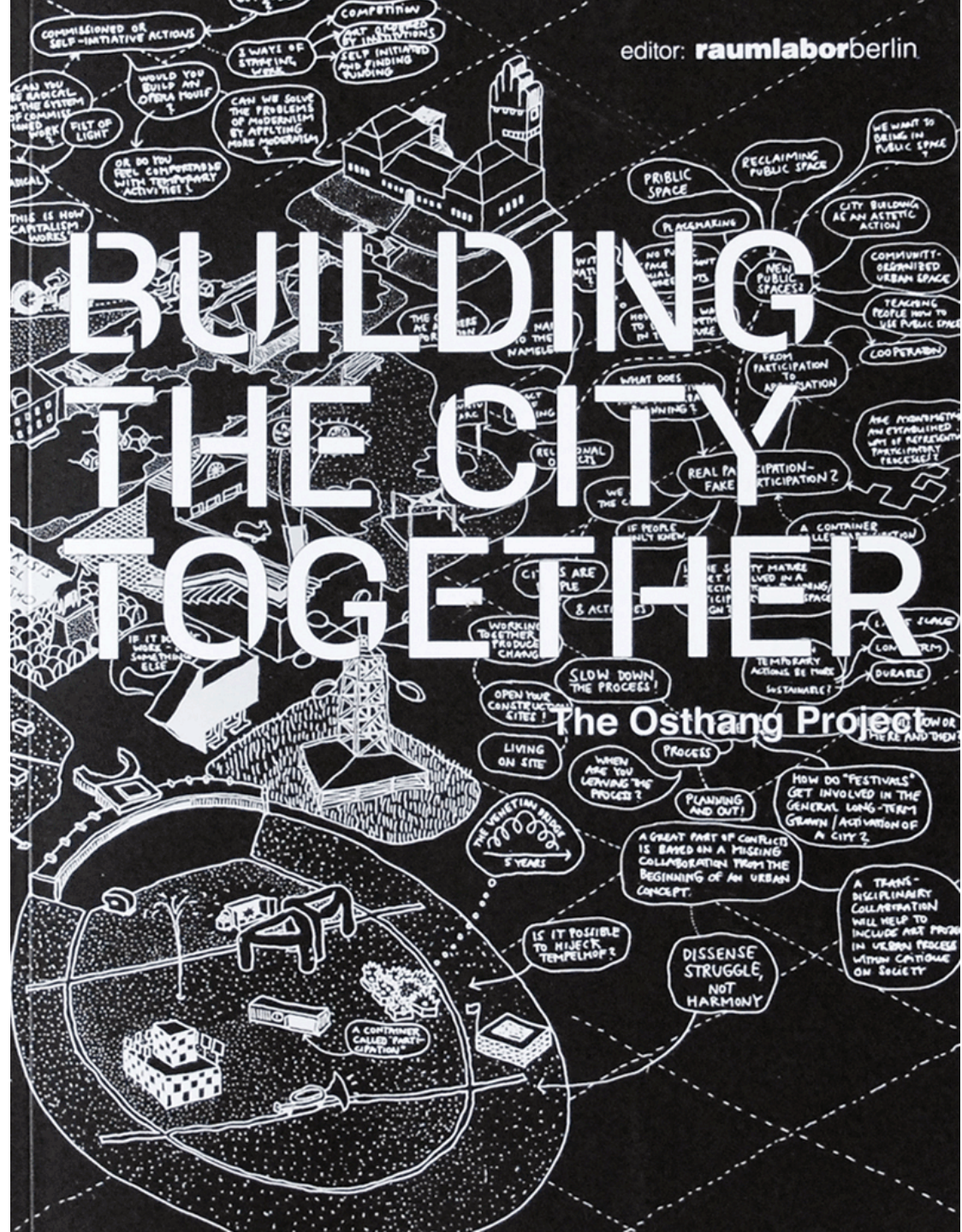
### **URBANISM**

We develop and test urban development strategies from concentrated local interventions to complex large scale urban transformation processes. Our specialization is dynamic master planning.

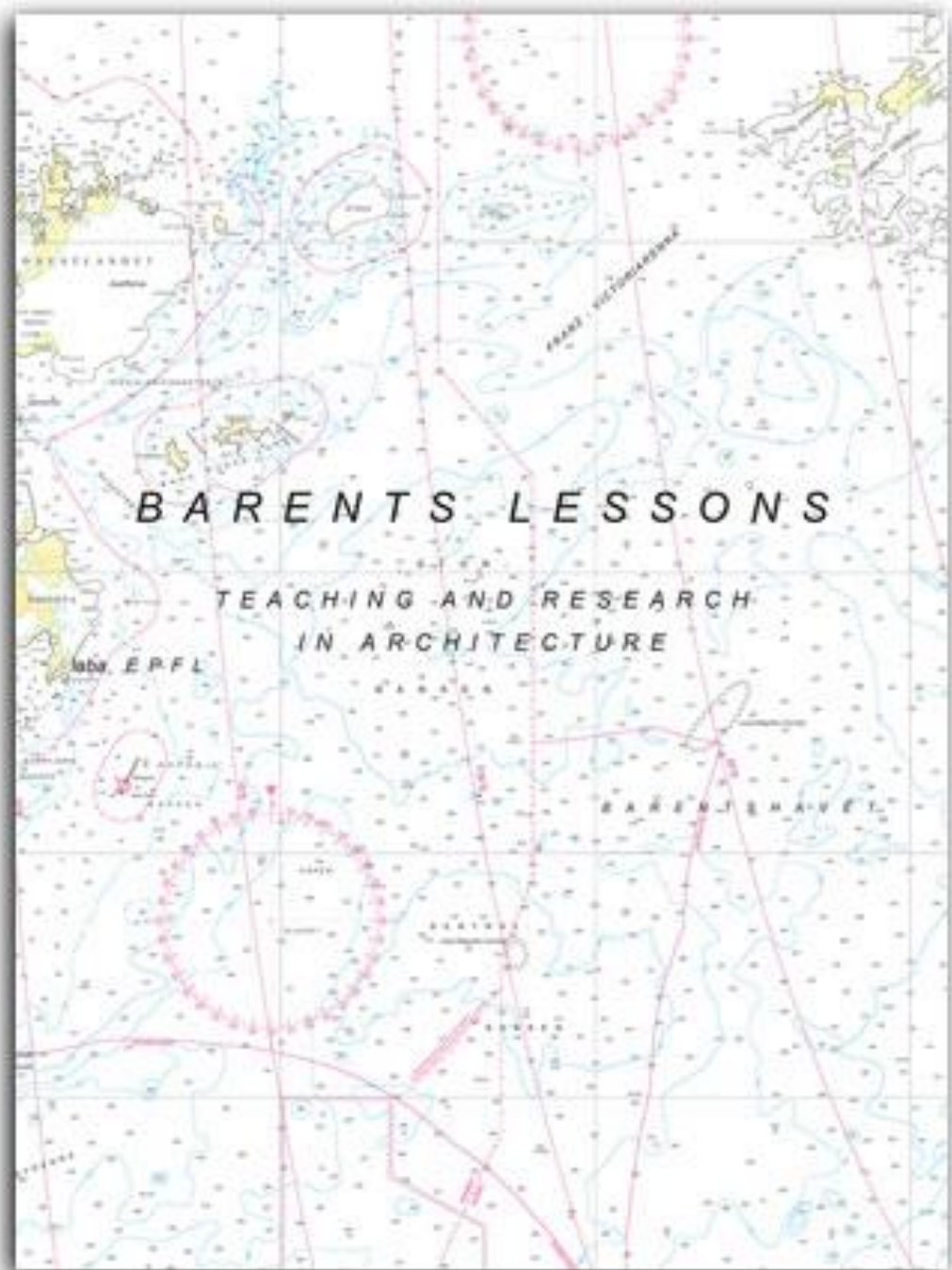
Christof Mayer  
 Jan Liesegang

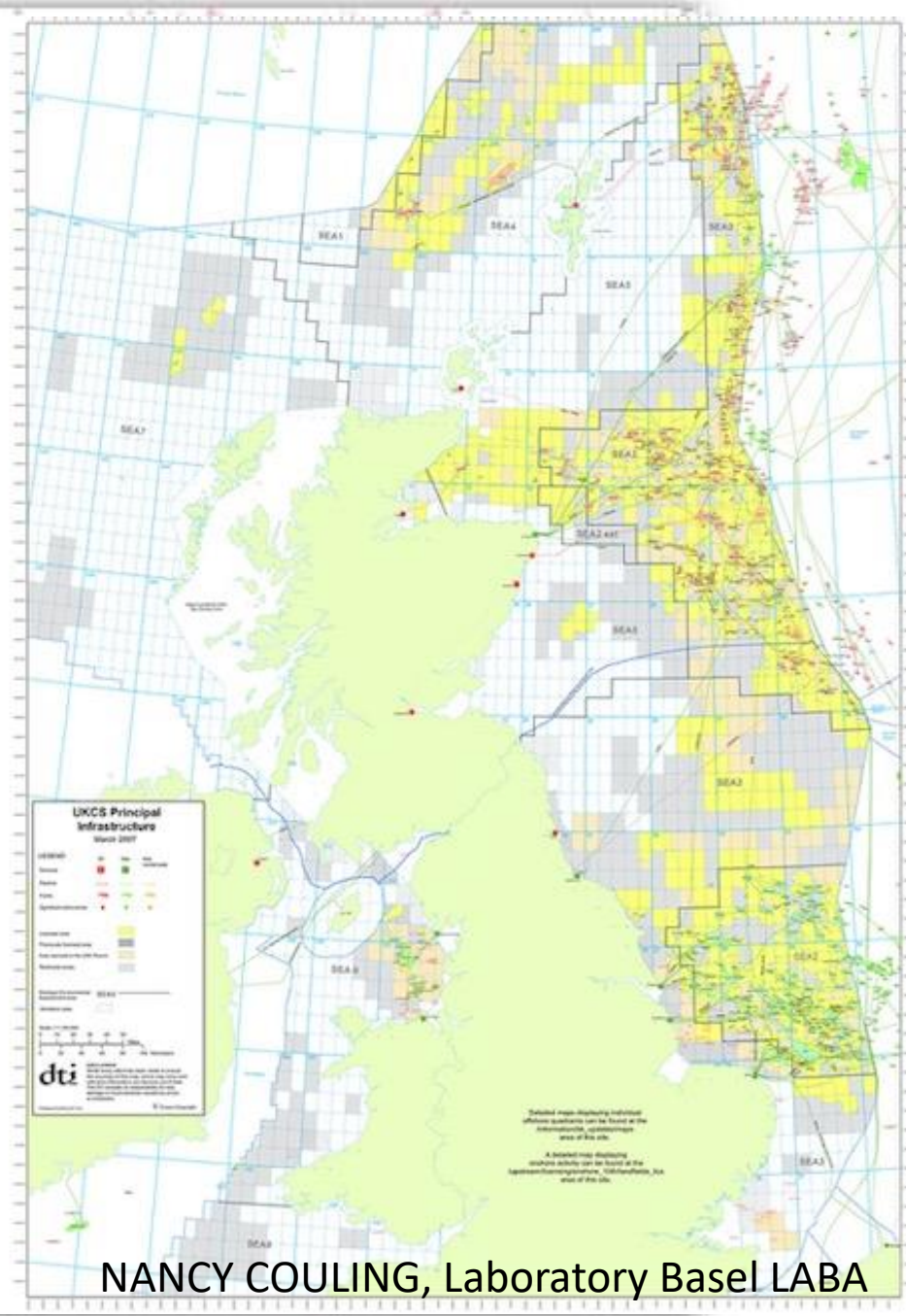
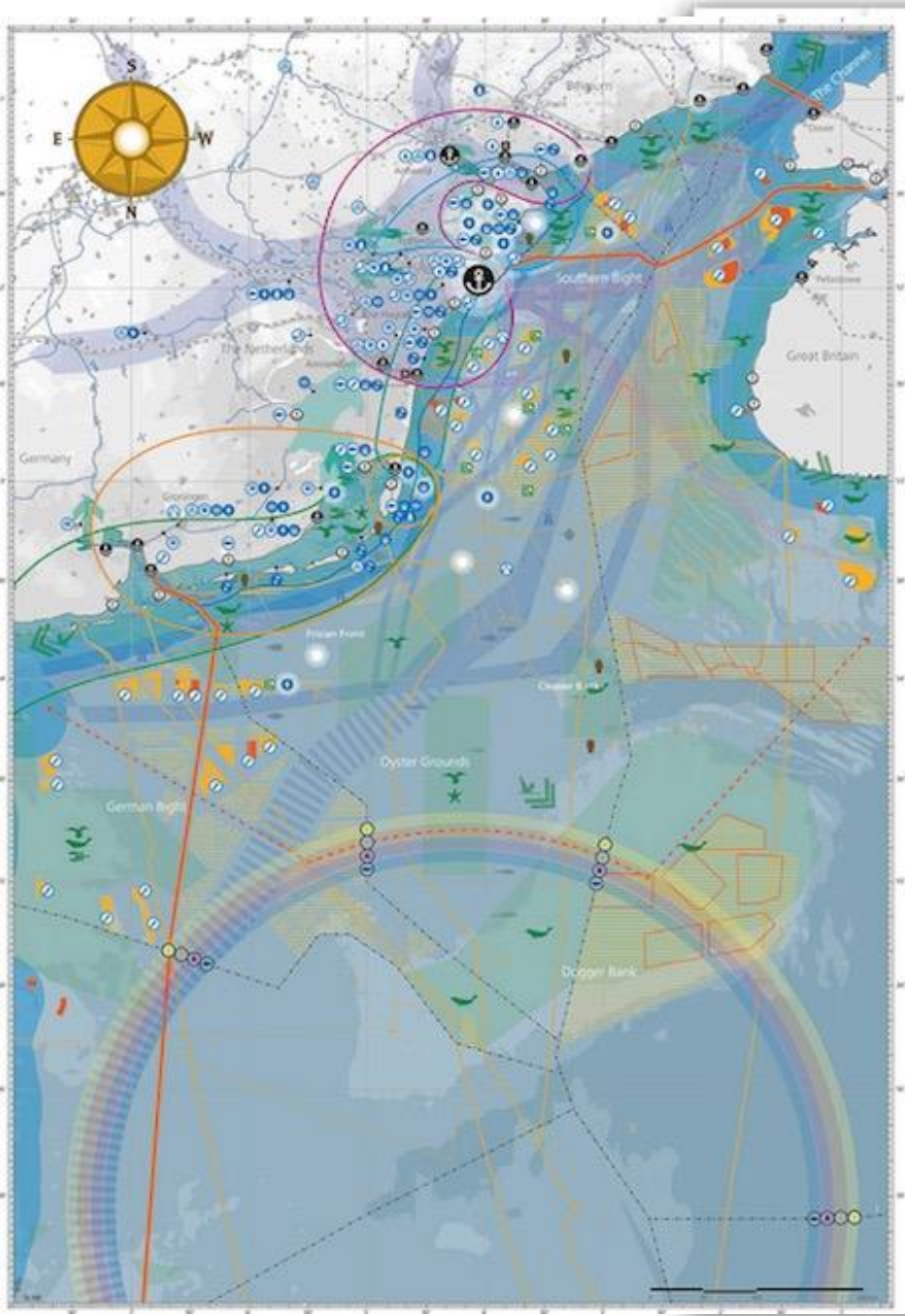
RAUMLABOR

editor: raumlaborberlin



NANCY COULING





NANCY COULING, Laboratory Basel LABA

The background of the entire cover is a detailed aerial photograph of the Lofoten archipelago. Overlaid on this are various layers of information: a fine grid, a network of thin lines in blue, red, and purple, and a circular diagram with radial lines on the left side. The text is printed in a serif font, with the title 'LOFOTEN' being the largest and most prominent.

LAYERED LANDSCAPES  
**LOFOTEN**

UNDERSTANDING OF COMPLEXITY,  
OTHERNESS AND CHANGE

LAYERED LANDSCAPES  
**LOFOTEN**

UNDERSTANDING OF COMPLEXITY,  
OTHERNESS AND CHANGE

Bok som snart skal utgis basert på masterkurs med 70 Grader Nord, i Lofoten; Actar Publishing



[“BRAILA LABORATORY - Alternative approaches to urban peripheries within a shrinking city \(B-LAB\)”](#) takes a interdisciplinary approach to a critical issue facing today’s European cities derived from an understanding of the local context – Braila, a city which, despite processes indicating economic and demographic decline, maintains a latent urban capital worthy of exploration. More information about the project coming soon at [www.urbanmarkers.ro](http://www.urbanmarkers.ro)

Collaboration between BAS and ‘Ion Mincu’- University of Architecture and Urbanism, Romania, with EØS support

# Society in Motion

SKILLING LANDSCAPES  
BORNE IN NORWAY:  
Questioning the pathways  
and evolution of  
settlements, networks  
and inventions through  
culturally negotiated  
legacies of skilled  
labour migration.



Discovery of Norwegian North Sea oil in December 1969, led to a heavy transformation in the built environment and settlement patterns of the nation's Western coastline.

Whilst the broad phenomena of specialist industrialisation and urbanisation has been widely documented, the 2017 'Society in Motion' Summer School will seek to uncover the spatial complexities that have evolved in response to the movement patterns of successive generations of skilled labour migrants in Norway.

Multi-scalar explorations of shortlisted localities, using various interdisciplinary techniques, will provide opportunity to document and celebrate this half century of technical, cultural, economic and social migration, and to propose enhancement through alternative spatially designed interventions.

Skilled labor migration  
Forced migration  
Commuting

Wednesday 26th July - Sunday 6th August

The Summer School is fully funded by Erasmus to cover the costs of participants.

Please email [Victor@BAS.org](mailto:Victor@BAS.org) to register.





Skilled labor migration; Ågotnes, Sotra

# Close-to-nature forest management in South Bavaria

An aerial photograph of a forest landscape in South Bavaria. The terrain is hilly and covered with a dense forest. The forest appears to be a mix of different tree species, with varying shades of green and brown. There are some clearings and areas of natural regeneration visible. The overall appearance is that of a well-managed, close-to-nature forest.

1500 ha of mixed forest in Bavaria, managed according to CNF principles since 1950:

- Harvesting volume: about 200 m<sup>3</sup>/ha between 1990 and 2010 by selective cutting
- No clearcuts, mixed and permanent natural regeneration
- Good road access (25 lfm of forest roads/ha) and cable crane logging

# Teiknforklaring

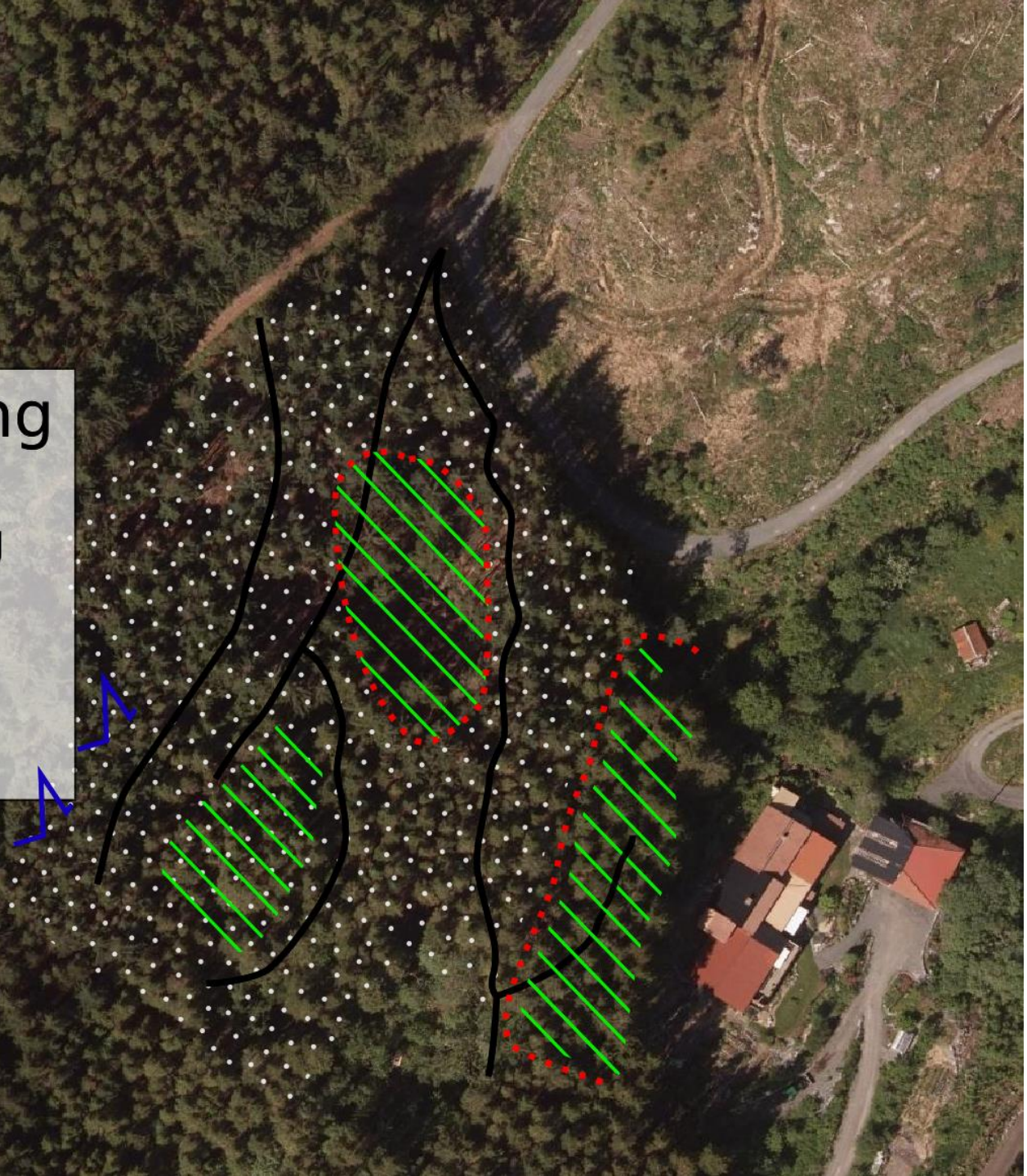
— Basveg

..... Hogst/rydding

==== Planting

— Barnehage

..... Tynning



# ”Fortetting på Bergensk” «Densification- The Bergen way»

3 weeks course

Architecture and placemaking

Course run by Department for City Architecture

Masterstudents



## Oppgaven 1

### Densification that consolidates and develop the place's existing character and qualities:

A- Make a simple analysis of the key elements defining the character of the place. Describe through photos, drawings and words – format A4 portrait

B –Build a modell of the site and work in groups

C- Choose five elements you mean are important to retain the place's existing character and qualities.

D- Develop a proposal to test the tolerance limit for the densification of the place: How much and how can we build before the character of the place is lost? Build the proposed volumes i the modell.

E- Calculate density (%BRA), heights and % usable outdoor areas for your proposal and compare with the regulations in the city plan ( both existing and proposed plan)

Gjennomgang hos byarkitekten 20. mars kl. 9-12



Vallastaden, OKIDOKI arkitekter, Sweden 2012-2017  
Competition illustration 2012



Realised project, 2017



Early intentional plan

Bærekraftig frokost- Bergen kommune- April

VI BRYR OSS OG VIL BEVEGE

# Drammens Tidende

TIRSDAG 6. mars 2018 • Uke 10 • Nr 55 FLERE NYHETER PÅ DT.NO Løsningskr. 25,- TIPS: 03232

ARKITEKTENS MASTEROPPGAVE OM BYDELEN HØSTER HEDER OG PRISER

## » Fjell er verdens beste sted å vokse opp.

ATDHE BELEGU, arkitekt og Fjell-patriot

SIDE 4-5



**FJELLMANNEN:** Arkitekt Atdhe Belegu (25) elsker Fjell og har laget en plan for bydelen som stadig høster heder og priser. Dessverre kom den ikke for sent.

FOTO: CAMILLA R. ØNDRØD

